



# Zurn One Sensor Wall Hung Toilet System with 1.1 GPF EcoVantage® Battery Powered Flush Valve Z.WC1.S

TAG \_\_\_\_\_

## ARCHITECTURAL & ENGINEERING SPECIFICATION

Complete EcoVantage® high efficiency 1.1 gpf sensor actuated, battery powered, wall mounted commercial water closet system with ZER6000AV-ONE-SM exposed, sensor activated chrome-plated closet diaphragm flushometer for either left or right hand supply, Z5955SS-EL open front commercial toilet seat, Z5615-BWL wall mounted vitreous china water closet with Z5977-NEO NeoSeal outlet sealing gasket assembly kit and Z5610-NUT-EXT-KIT manufactured by Zurn.

## PRODUCT FEATURES

- 1.1 gpf (gallons per flush)
- Wall mounted elongated front rim top spud toilet
- High efficiency siphon jet flush action
- 2-1/8" fully glazed trapway
- Large water spot - 12" x 10"
- Vitreous china wall bowl construction
- Static weight load of 1000 lb\*
- \*Not intended for bariatric use
- Diaphragm- type flushometer complete with Zurn's Go Blue® TPE, chloramine resistant, dual seal diaphragm with a clog resistant, triple filtered bypass
- High pressure vacuum breaker with one piece hex coupling nut
- Adjustable tailpiece
- True mechanical override button
- Control stop has internal siphon-guard protection, sweat solder kit, wall flange with set screw
- Open front, elongated, white commercial toilet seat with SS check hinges
- NeoSeal® outlet gasket assembly
- 14% water savings over standard 1.28 gpf system
- 31% water savings over standard 1.6 gpf system

## COMPLIANCE AND CERTIFICATION:

Meets the American Disabilities Guidelines and ANSI A117.1 requirements when installed according to these requirements.

- Fixture - Complies with ASME A112.19.2 / CSA B45.1
- Flush Valve - Complies with ASSE 1037 / ASME A112.1037 / CSA B125.37



This product should be used with a WaterSense labeled counterpart with a compatible flow volume to ensure that the entire system meets the requirements for water efficiency and performance.



## ZURN ONE SYSTEM PACKOUT INCLUDES:

### FIXTURE - Z5615-BWL:

Vitreous China, 1.1 gpf [4.2 Lpf] or greater high efficiency wall hung toilet with siphon jet flushing action and elongated front rim with 1-1/2" [38mm] top spud

### FLUSH VALVE - ZER6000AV-ONE-SM:

Exposed, quiet diaphragm-type, chrome-plated flushometer valve with a polished exterior. Complete with Zurn's AquaVantage® TPE, chloramine resistant, dual seal diaphragm with a clog resistant, triple filtered bypass. The valve incorporates a 6VDC motor actuator, a battery powered automatic sensor, chrome-plated metal cover with manual override push button and 10 degree angled sensor

### Z5955SS-EL:

Elongated, open front white toilet seat with stainless steel check hinges

### Z5610-NUT-EXT-KIT:

Retrofit nut kit for extending carrier studs from existing wall

### Z5977-NEO:

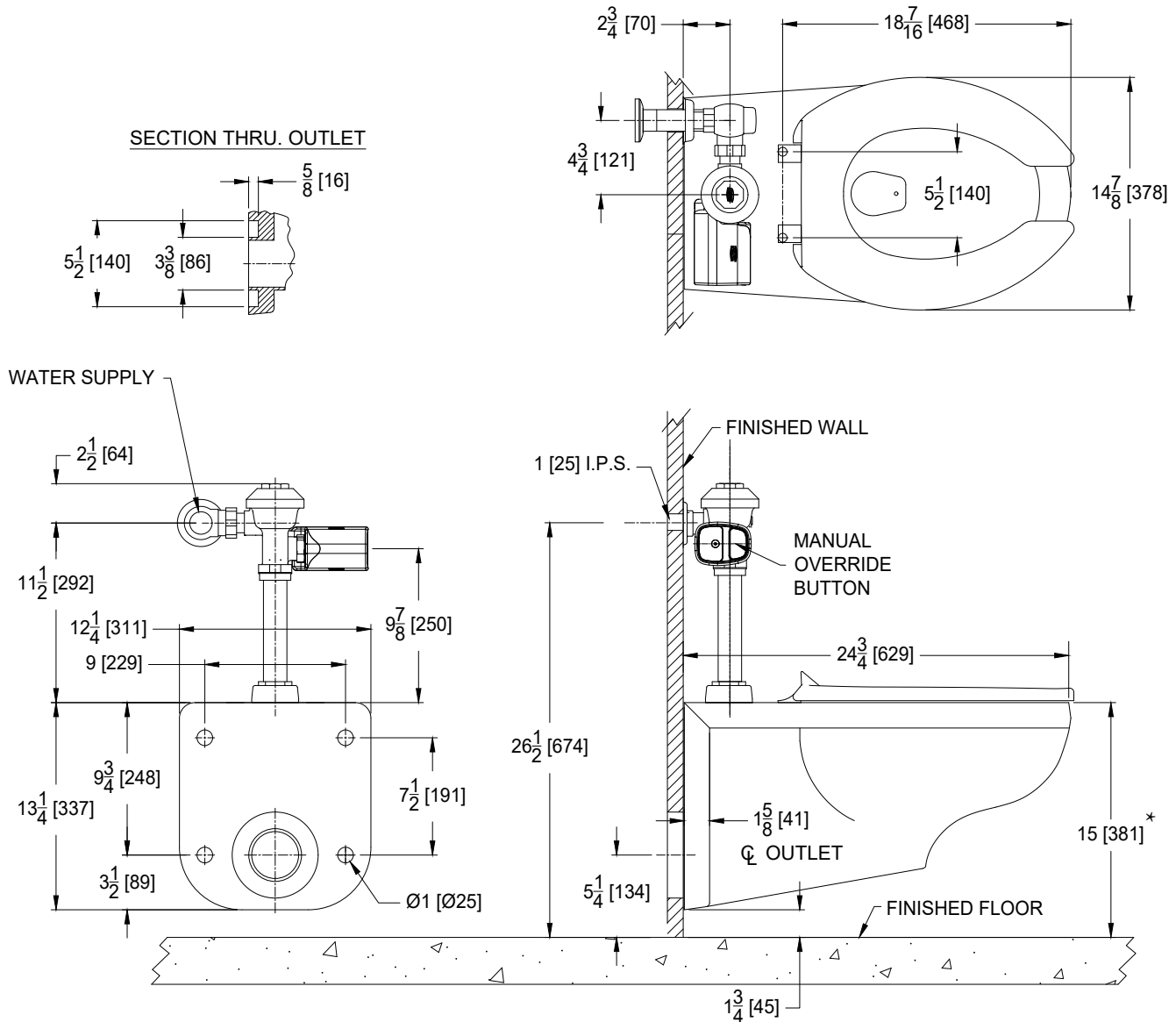
NeoSeal® gasket kit for wall mounted bowls

### RECOMMENDED CARRIER:

Z1201 or Z1202 EZCarry™ 500 lbs load rated High Efficiency Carrier

ARCHITECTURAL & ENGINEERING APPROVAL

## Rough-in / Overview dimensions



\*NOTE: For ADA compliance, top of seat height should be installed at 17" [431mm] - 19" [482mm] from finished floor.



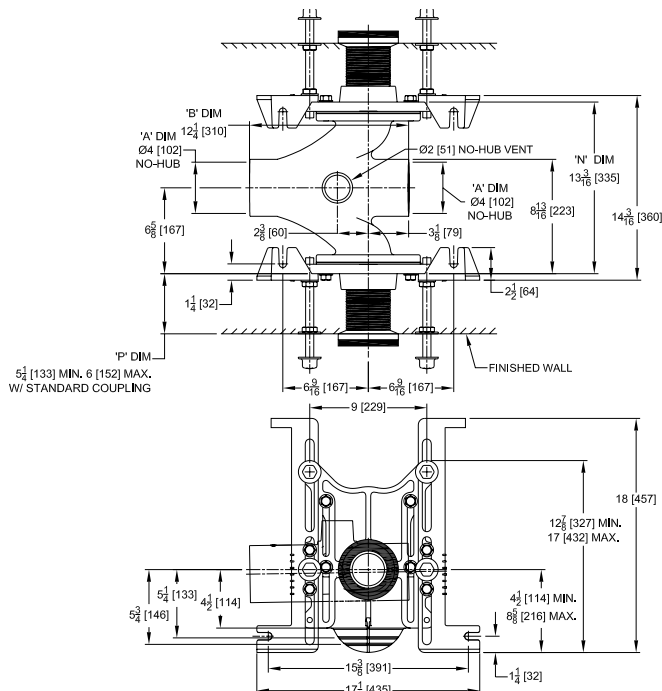
## Z1201-ND4

EZCARRY® ADJUSTABLE HORIZONTAL HIGH PERFORMANCE  
BACK-TO-BACK SIPHON JET NO-HUB WATER CLOSET CARRIER  
SYSTEM

SPECIFICATION SHEET

TAG \_\_\_\_\_

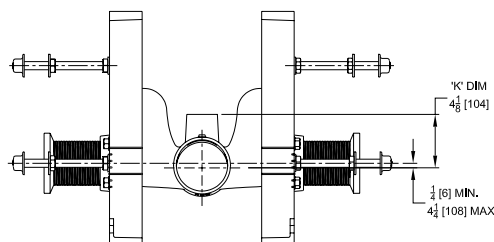
Design and Dimensional Data (inches and [ mm ]) are Subject to Manufacturing Tolerances and Change Without Notice



Product Number	Approx. Wt. lbs [kg]
Z1201-ND4	104 [47]

### Note:

1. Z coupling, Min. 'P' Dim. Obtainable=2 [51].EZ-Set™ Coupling, Min. 'P' Dim. Obtainable=4-1/4 [108] or 2-1/16 [52] for 12 [305] NPT.
2. Feet bolted to floor using min. 1/2 [13] dia. anchors.



### Z1201-ND4 Illustrated

### ENGINEERING SPECIFICATION: ZURN Z1201-ND4

EZCarry® horizontal siphon jet water closet carrier system with high performance waterway and 4" [102mm] no-hub connections. System includes Dura-Coated cast iron double main fitting with hydro-mechanically optimized sweep and extended 2" [51mm] vent, adjustable faceplates, QuickFit™ faceplate gaskets, floor mounted pre-fab slotted foot supports with top anchoring pre-fab support base, fixture bolts, trim, stud protectors, bonded "Neo-Seal" gaskets, and corrosion resistant, adjustable 3" [76mm] dia. X 6" [152mm] couplings with integral test caps designed to increase flow velocity and line carry. EZCarry® system complies with the requirements of ASME A112.6.1M up to a 500 lbs [227 kg] static load rating.

### OPTIONS (Check/specify appropriate options)

\_\_\_ Z1201-ND4 4 [102] Hub Back-to-Back Inlet (Double)

### PREFIXES

\_\_\_ Z D.C.C.I. System with Zurn ZZ Adjustable Coupling\*  
\_\_\_ ZQ D.C.C.I. System with NPT Faceplate, Non-Adjustable Coupling

### SUFFIXES

___ -A Auxiliary Support Assembly (For 'P' Dim. Greater than 18 [457])	___ -G Galvanized Cast Iron
___ -CC Corrosion Resistant Cast Iron Coupling (2-1/4 [57] to 12 [305])	___ -M Auxiliary Foot Support (for 'P' Dim. 7 thru 18 [178 thru 457])
___ -CE EZ-Set™ Coupling (NPSM 6 [152] , 12 [305] or custom) (NPT 12 [305] or custom)	___ -RYK17 One Piece Unistrut Pre-Fab Foot Support
___ -CL Custom Length Standard Coupling with Integral Test Cap (Specify Length 4, 8, 10, 12 [102, 203, 254, 305])	___ -VP Vandal-Proof Trim
___ -CS 2-1/4 [57] Polymer Coupling with Integral Test Cap	___ -X2 2 [51] Carrier Foot Extension Assembly
___ -F Floor Mounted, Back Outlet Fixture Support	___ -X3 3 [76] Carrier Foot Extension Assembly
	___ -45 Finishing Frame for Siphon Jet System
	___ -50 Flush Valve Supply Support for Water Closets

\* Regularly furnished unless otherwise specified.

⚠ **WARNING:** Cancer and Reproductive Harm - [www.P65Warnings.ca.gov](http://www.P65Warnings.ca.gov)

⚠ **ADVERTENCIA:** Cáncer y daño reproductivo - [www.P65Warnings.ca.gov](http://www.P65Warnings.ca.gov)

⚠ **AVERTISSEMENT:** Cancer et effets néfastes sur la reproduction - [www.P65Warnings.ca.gov](http://www.P65Warnings.ca.gov)

Zurn Industries, LLC | Specification Drainage Operation  
1801 Pittsburgh Avenue, Erie, PA 16502, Ph. 855.663.9876

In Canada | Zurn Industries Limited  
7900 Goreway Drive, Unit 10, Brampton, Ontario L6T 5W6, Ph. 877.892.5216

[www.zurn.com](http://www.zurn.com)

Rev. P  
Date: 06/04/2024  
C.N. No. 146025  
Patent [zurn.com/patents](http://zurn.com/patents)  
Prod. | Dwg. No. Z1201-ND4

Page 1 of 1



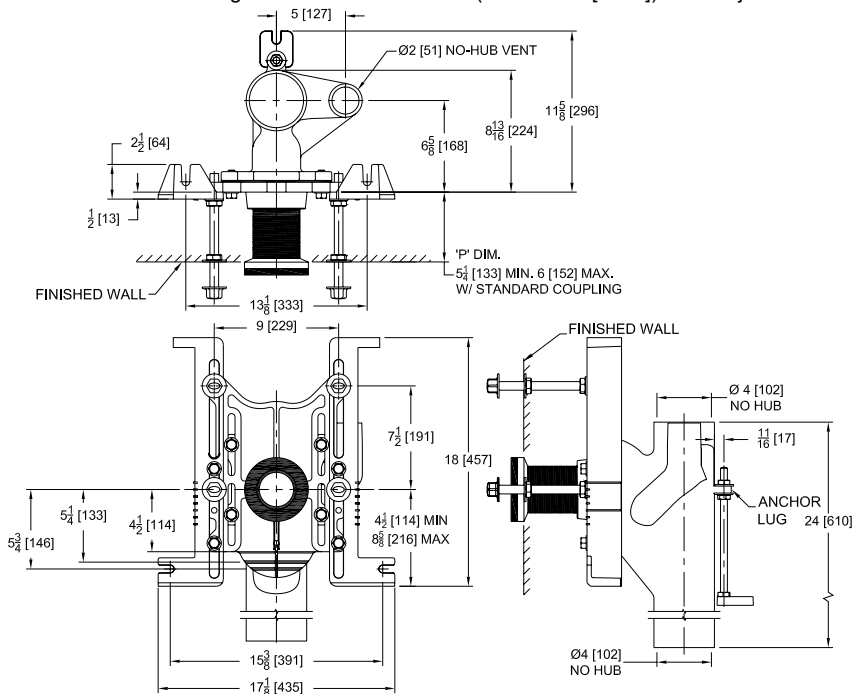
## Z1202-N4

EZCARRY® ADJUSTABLE VERTICAL HIGH PERFORMANCE  
SIPHON JET NO-HUB WATER CLOSET CARRIER SYSTEM

SPECIFICATION SHEET

TAG \_\_\_\_\_

Design and Dimensional Data (inches and [ mm ]) are Subject to Manufacturing Tolerances and Change Without Notice



Product Number	Approx. Wt. lbs [kg]
Z1202-N4	73 [33]

### Note:

1. Z Coupling, Min. 'P' Dim. Obtainable = 2 [51]. EZ-Set™ Coupling, Min. 'P' Dim. Obtainable = 4-1/4 [108] or 2-1/16 [52] for 12 [305] NPT
2. Feet bolted to floor using min. 1/2 [13] dia. anchors.
3. Rear anchor foot assembly required for secure installation.
4. 2 [51] No-Hub vent connection regularly furnished on right hand side. Left hand available when specified (Suffix -VL)
5. Auxiliary inlet available right (-JR) or left (-JL) or both sides (-JJ) when specified.

### ENGINEERING SPECIFICATION: ZURN Z1202-N4

EZCarry® vertical siphon jet water closet carrier system with high performance waterway and 4" [102mm] no-hub connections. System includes Dura-Coated cast iron main fitting with hydro-mechanically optimized sweep and extended 2" [51mm] vent, adjustable faceplate, QuickFit™ faceplate gasket, floor mounted pre-fab slotted foot supports with top anchoring pre-fab support base, heavy-duty 1/2" [13mm] rear anchor tie down, fixture bolts, trim, stud protectors, bonded "Neo-Seal" gasket, and corrosion resistant, adjustable 3" [76mm] dia. X 6" [152mm] coupling with integral test cap designed to increase flow velocity and line carry. EZCarry® system complies with the requirements of ASME A112.6.1M up to a 500 lbs [227 kg] static load rating.

### OPTIONS (Check/specify appropriate options)

\_\_\_\_ Z1202-N4 4 [102] No-Hub Stack, Single Inlet, 2 [51] Right Hand Vent

### PREFIXES

\_\_\_\_ Z D.C.C.I. System with Zurn ZZ Adjustable Coupling\*  
\_\_\_\_ ZQ D.C.C.I. System with NPT Faceplate, Non-Adjustable Coupling

### SUFFIXES

____ -A	Auxiliary Support Assembly (For 'P' Dim. Greater than 18 [457])	____ -JL	2 [51] Left-Hand Auxiliary Inlet
____ -CC	Corrosion Resistant Cast Iron Coupling (2-1/4 [57] to 12 [305])	____ -JR	2 [51] Right-Hand Auxiliary Inlet
____ -CE	EZ-Set™ Coupling (NPSM 6 [152], 12 [305] or custom) (NPT 12 [305] or custom)	____ -M	Auxiliary Foot Support (for 'P' Dim. 7 thru 18 [178 thru 457])
____ -CL	Custom Length Standard Coupling with Integral Test Cap (Specify Length 4, 8, 10, 12 [102, 203, 254, 305])	____ -RYK17	One Piece Unistrut Pre-Fab Foot
____ -CS	2-1/4 [57] Polymer Coupling with Integral Test Cap	____ -VL	Left Hand Vent Connection
____ -F	Mounted, Back Outlet Fixture Support	____ -VP	Vandal-Proof Trim
____ -G	Galvanized Cast Iron	____ -X2	2 [51] Carrier Foot Extension Assembly
____ -JJ	Two 2 [51] Auxiliary Inlets	____ -X3	3 [76] Carrier Foot Extension Assembly
		____ -45	Finishing Frame for Siphon Jet Water System
		____ -50	Flush Valve Supply Support for Water Closets

\* Regularly furnished unless otherwise specified.

⚠ **WARNING:** Cancer and Reproductive Harm - [www.P65Warnings.ca.gov](http://www.P65Warnings.ca.gov)

⚠ **ADVERTENCIA:** Cáncer y daño reproductivo - [www.P65Warnings.ca.gov](http://www.P65Warnings.ca.gov)

⚠ **AVERTISSEMENT:** Cancer et effets néfastes sur la reproduction - [www.P65Warnings.ca.gov](http://www.P65Warnings.ca.gov)

Zurn Industries, LLC | Specification Drainage Operation  
1801 Pittsburgh Avenue, Erie, PA 16502, Ph. 855.663.9876

In Canada | Zurn Industries Limited  
7900 Goreway Drive, Unit 10, Brampton, Ontario L6T 5W6, Ph. 877.892.5216

[www.zurn.com](http://www.zurn.com)

Rev. N  
Date: 07/23/24  
C.N. No. 146183  
Patent [zurn.com/patents](http://zurn.com/patents)  
Prod. | Dwg. No. Z1202-N4

Page 1 of 1



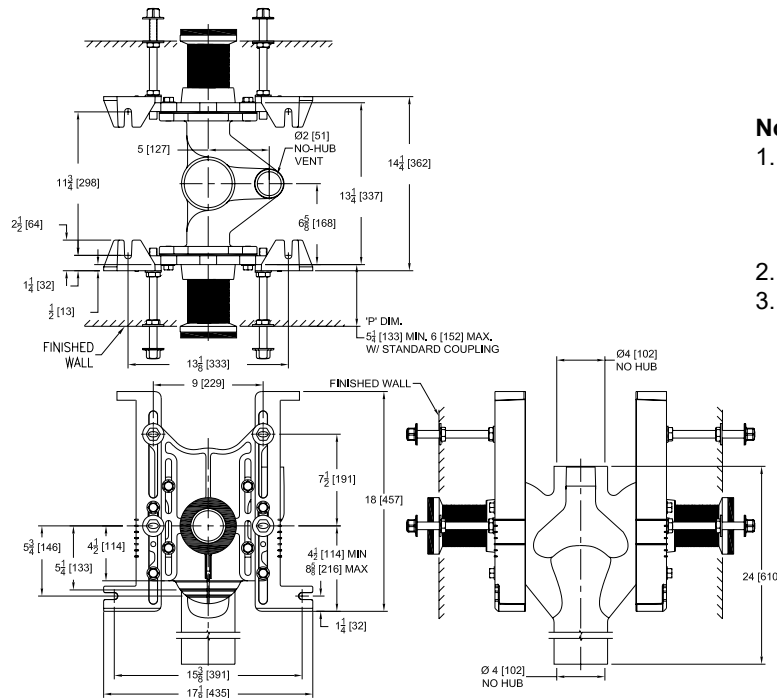
## Z1202-ND4

EZCARRY® ADJUSTABLE VERTICAL BACK-TO-BACK  
HIGH PERFORMANCE SIPHON JET NO-HUB WATER  
CLOSET CARRIER SYSTEM

SPECIFICATION SHEET

TAG \_\_\_\_\_

Design and Dimensional Data (inches and [ mm ]) are Subject to Manufacturing Tolerances and Change Without Notice



Product Number	Approx. Wt. lbs [kg]
Z1202-ND4	119 [54]

### Note:

1. Z Coupling, Min. 'P' Dim. Obtainable = 2 [51].  
EZ-Set™ Coupling, Min. 'P' Dim.  
Obtainable = 4-1/4 [108] or 2-1/16 [52]  
for 12 [305] NPT
2. Feet bolted to floor using min. 1/2 [13] dia. anchors.
3. Auxiliary inlet available right (-JR) or left (-JL) or both sides (-JJ) when specified.

### ENGINEERING SPECIFICATION: ZURN Z1202-ND4

EZCarry® vertical siphon jet water closet carrier system with high performance waterway and 4" [102mm] no-hub connections. System includes Dura-Coated cast iron double main fitting with hydro-mechanically optimized sweep and extended 2" [51mm] vent, adjustable faceplates, QuickFit™ faceplate gaskets, floor mounted pre-fab slotted foot supports with top anchoring pre-fab support base, fixture bolts, trim, stud protectors, bonded "Neo-Seal" gaskets, and corrosion resistant, adjustable 3" [76mm] dia. X 6" [152mm] couplings with integral test caps designed to increase flow velocity and line carry. EZCarry® system complies with the requirements of ASME A112.6.1M up to a 500 lbs [227 kg] static load rating.

### OPTIONS (Check/specify appropriate options)

\_\_\_\_ Z1202-ND4 4 [102] No-Hub Stack, Double Inlets, 2 [51] Vent

### PREFIXES

\_\_\_\_ Z D.C.C.I. System with Zurn ZZ Adjustable Coupling\*  
\_\_\_\_ ZQ D.C.C.I. System with NPT Faceplate, Non-Adjustable Coupling

### SUFFIXES

____ -A	Auxiliary Support Assembly (For 'P' Dim. Greater than 18 [457])	____ -JJ	Two 2 [51] Auxiliary Inlets
____ -CC	Corrosion Resistant Cast Iron Coupling (2-1/4 [57] to 12 [305])	____ -JL	2 [51] Left-Hand Auxiliary Inlet
____ -CE	EZ-Set™ Coupling (NPSM 6 [152], 12 [305] or custom) (NPT 12 [305] or custom)	____ -JR	2 [51] Right-Hand Auxiliary Inlet
____ -CL	Custom Length Standard Coupling with Integral Test Cap (Specify Length 4, 8, 10, 12 [102, 203, 254, 305])	____ -M	Auxiliary Foot Support (for 'P' Dim. 7 thru 18 [178 thru 457])
____ -CS	2-1/4 [57] Polymer Coupling with Integral Test Cap (ZZ Coupling Only)	____ -RYK17	One Piece Unistrut Pre-Fab Foot
____ -F	Mounted, Back Outlet Fixture Support	____ -VP	Vandal-Proof Trim
____ -G	Galvanized Cast Iron	____ -X2	2 [51] Carrier Foot Extension Assembly
		____ -X3	3 [76] Carrier Foot Extension Assembly
		____ -45	Finishing Frame for Siphon Jet Water System
		____ -50	Flush Valve Supply Support for Water Closets

\* Regularly furnished unless otherwise specified.

⚠ **WARNING:** Cancer and Reproductive Harm - [www.P65Warnings.ca.gov](http://www.P65Warnings.ca.gov)

⚠ **ADVERTENCIA:** Cáncer y daño reproductivo - [www.P65Warnings.ca.gov](http://www.P65Warnings.ca.gov)

⚠ **AVERTISSEMENT:** Cancer et effets néfastes sur la reproduction - [www.P65Warnings.ca.gov](http://www.P65Warnings.ca.gov)

Zurn Industries, LLC | Specification Drainage Operation  
1801 Pittsburgh Avenue, Erie, PA 16502, Ph. 855.663.9876

In Canada | Zurn Industries Limited  
7900 Goreway Drive, Unit 10, Brampton, Ontario L6T 5W6, Ph. 877.892.5216

[www.zurn.com](http://www.zurn.com)

Rev. M  
Date: 07/23/24  
C.N. No. 146183  
Patent [zurn.com/patents](http://zurn.com/patents)  
Prod. | Dwg. No. Z1202-ND4

Page 1 of 1